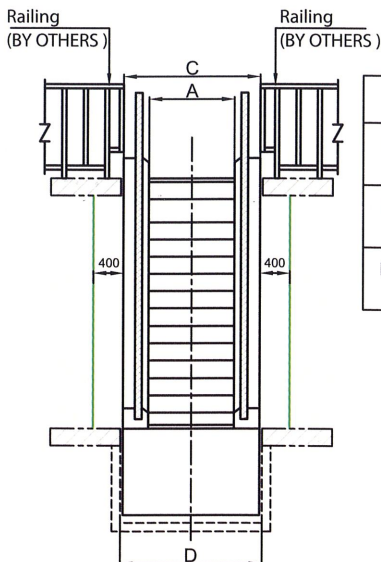
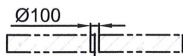
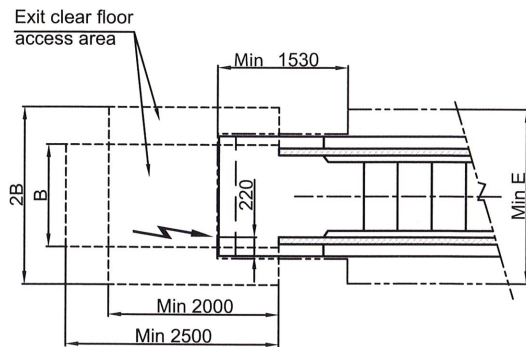
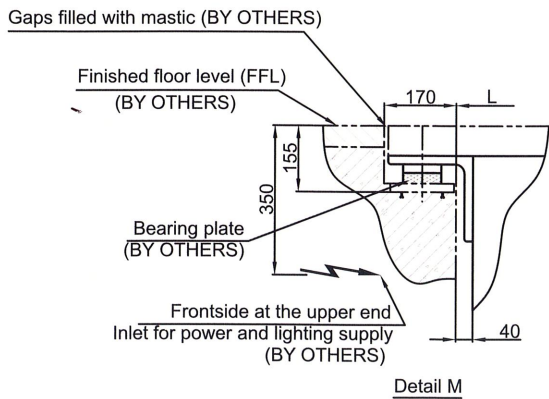
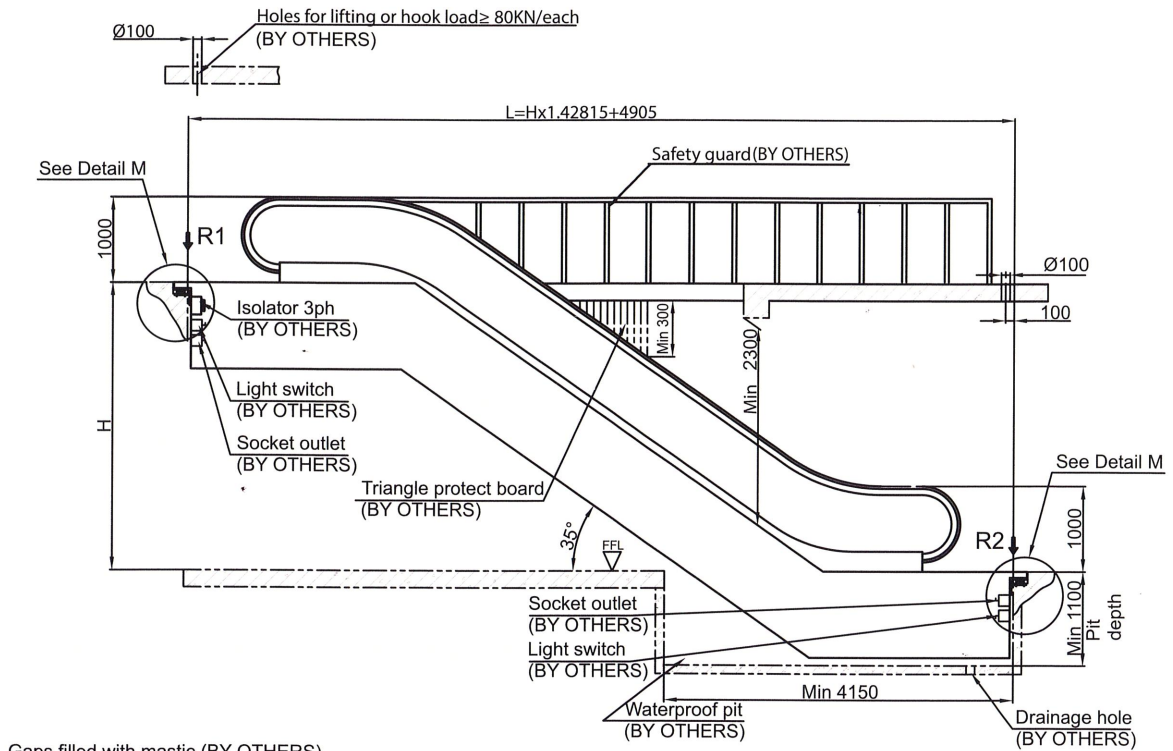


DC/S235 Commercial / Slimline Escalator Layout Drawing



Type	A	B	C	D	E	Speed
DC/S235-600 3600 p/h	600	1150	1200	1260	2000	V=0.5m/s
DC/S235-800 4800 p/h	800	1350	1400	1460	2200	
DC/S235-1000 6000 p/h	1000	1550	1600	1660	2400	

Remarks:

1. There should be no water in the pit, and the surface of the pit should be smooth and flat.
2. The building support at both end of escalator should keep in level.
3. If the two escalators are put in parallel, the gap between the two escalators should not less than 10mm.
4. When the width of step A=600mm, the truss must be extended by 420mm.
5. All dimension in mm.